



Troubled Families Programme

Helping up to **400,000** families with multiple complex needs

“I don’t know where I would be if [keyworker] hadn’t come to work with me, I’d lost hope”

Mother

98%

Troubled families coordinators say the programme is effective at achieving whole family working.

78%

Keyworkers say the programme is effective at achieving long-term change in families’ circumstances.

95%

Troubled families employment advisers say the programme is effective at achieving long-term positive change in families’ circumstances.

Almost 400,000

families worked with in a whole family way with funding from the programme.

Over 20,000

families where one or more adult has succeeded in moving into continuous employment.

Over 171,000

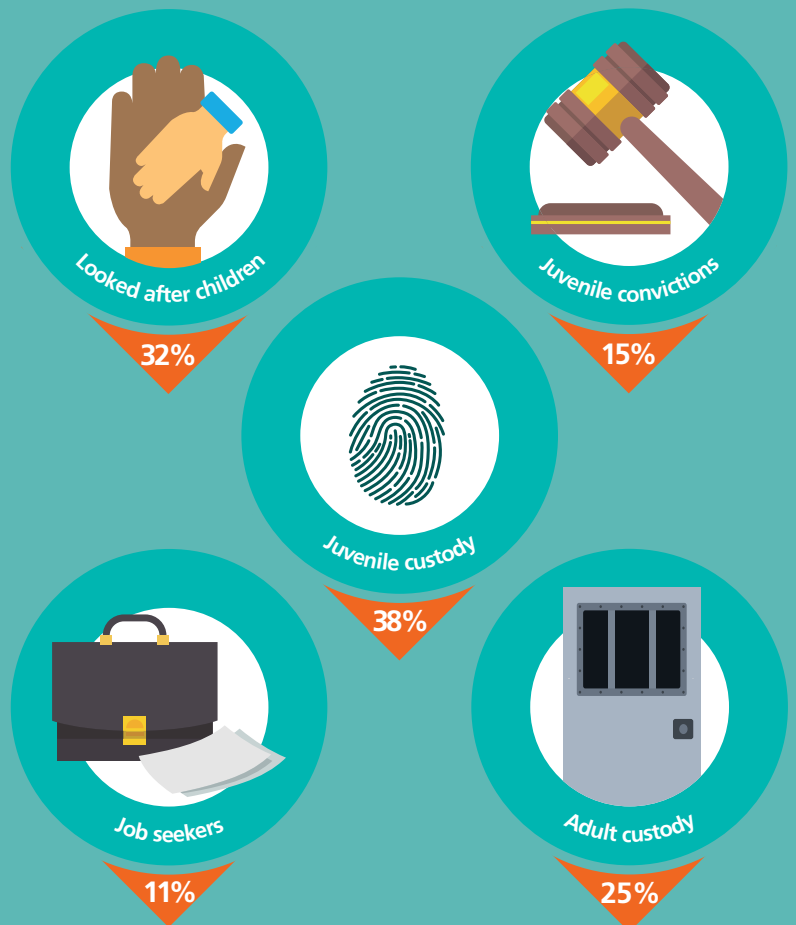
families achieved significant and sustained progress.

The programme is funding:

- **MORE** early help and keyworkers coordinating support for families
- **INTEGRATION** of services in communities
- **TRAINING** for whole family working
- **INTELLIGENCE** and data sharing to better understand the needs of families and what works
- **COMMUNITY SUPPORT** for families so they are more resilient in the long term

Better outcomes for families

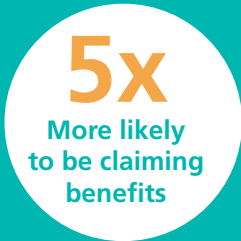
In the 19-24 months after families joined the programme compared to families in the comparison group:



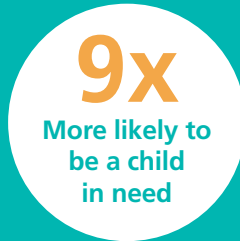
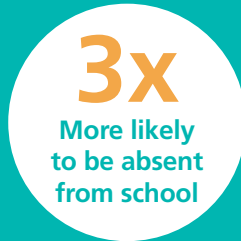
“It made me want to actually aspire to be like her [keyworker] in the future, and help other mums to see the light” **Mother**

Compared to the rest of the population, in the year before starting the programme

adults were:



children were:



Families have at least **two headline** problems:



Local authorities receive payments of up to **£1,800** per family who achieve successful outcomes

The programme achieves its aims through:



A whole family approach means each family has a named lead worker, a full assessment of the problems they face and an agreed plan with stretching goals