

# Hertfordshire Family Centre Service

## Supporting families, parents and carers

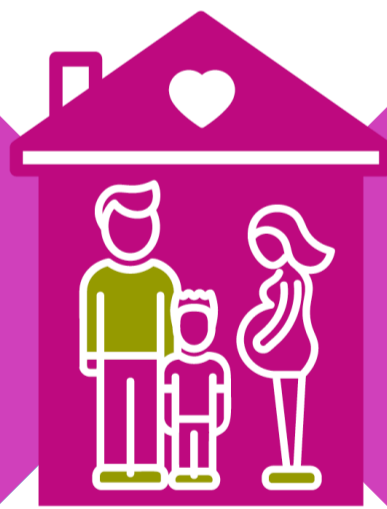
Family Centres are there to help with all aspects of life; from raising healthy, happy children to supporting with problems at home. They offer both universal and targeted services.

The Family Centre Service is there to offer advice and guidance or to support families during periods of difficulty. They offer targeted support through 1-1 and group packages of support, tailored to the needs of families. To find out more contact the Family Centre Service.


Your service users could benefit from some of the services offered.

### Some of the support on offer includes:

- Health advice
- Relationship support
- Parenting courses
- Antenatal support
- Signposting to SEND services
- CV support and finding a job
- And so much more



### Refer a family or user to the service:

- Use the [online referral form](#)
  - or
  - Contact the [centres directly](#)
-  0300 123 7572

A family must register with the Family Centre to be able to access the services on offer;  
[register here](#)



Hertfordshire  
Family Centre  
Service