

# Performance report



**Families  
First**

Early help, brighter futures

# Hertfordshire

January 2023 –  
December 2023

[www.hertfordshirefamiliesfirst.org.uk](http://www.hertfordshirefamiliesfirst.org.uk)

# Families First – assessment numbers



Family First Assessments (FFAs) are used to identify support for families who agree to multi-agency early help.



The number of FFAs finalised in the 12 months to the end of December 2023 was 729, which included 1,709 children. 31.3% of children supported are non-White British. 13.9% of children had an EHCP.



Intensive Family Support teams (411) and schools / school partnerships (196) led on the majority of FFAs.



Between January 2023 and December 2023, 1,589 children were supported using 'short term work' interventions.

# Presenting needs and outcomes



78% of FFAs include at least one child / young person member of the family with a health need. Over 60% of FFAs include issues about family relationships, adult health and education concerns.



The most frequently recorded primary needs for children (at the start of assessments) are unmet mental health / emotional wellbeing needs, family relationships and behaviour.



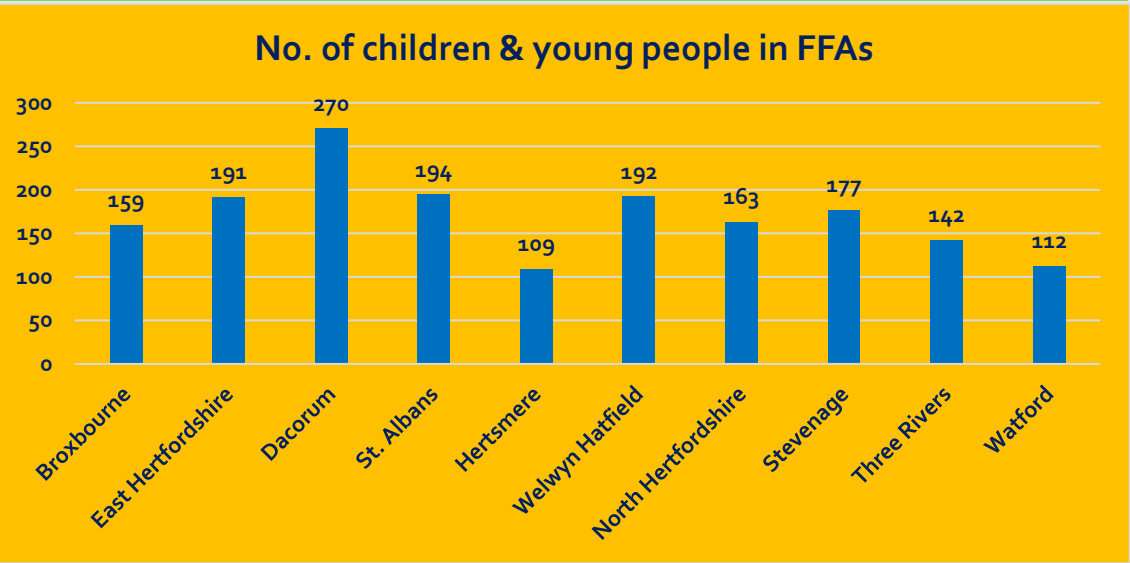
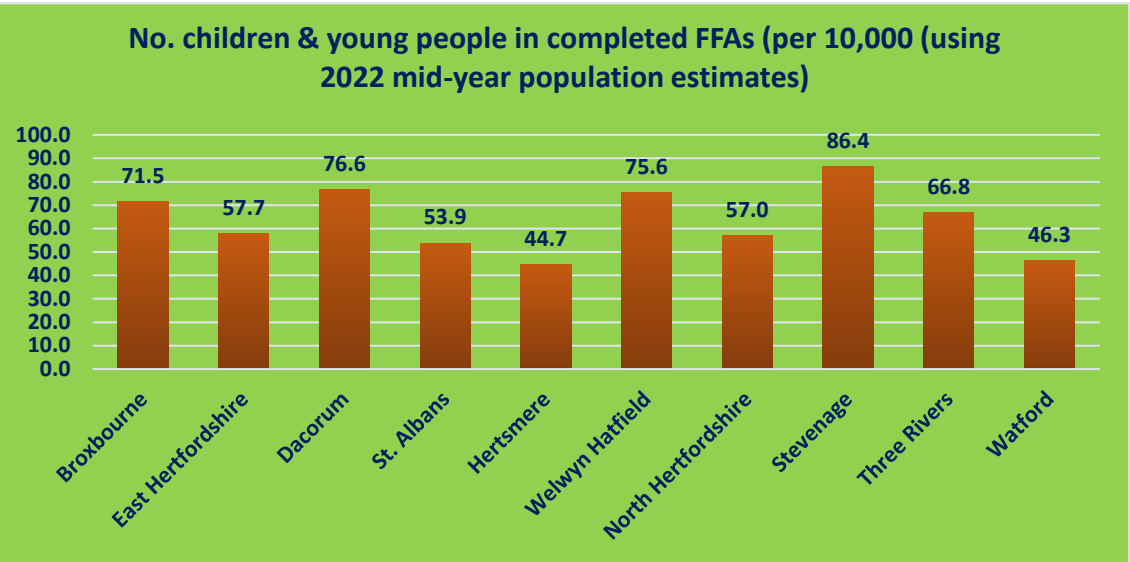
The outcome success rate following the completion of FFAs for the period between January 2023 and December 2023 was 75%. 14% of families disengaged or withdrew consent; however, it is often found that much has been achieved prior to disengagement. 11% of FFAs result in cases transferred to LCS for support from Specialist & Safeguarding Services.

# Families First Assessments (January 2023 – December 2023)



## No. of children in completed FFAs

<i>District</i>	No. Children	Children per 10,000 (2022 Mid Year Estimates)
Broxbourne	159	71.5
East Hertfordshire	191	57.7
Dacorum	270	76.6
St. Albans	194	53.9
Hertsmere	109	44.7
Welwyn Hatfield	192	75.6
North Hertfordshire	163	57.0
Stevenage	177	86.4
Three Rivers	142	66.8
Watford	112	46.3
<b>Hertfordshire</b>	<b>1,709</b>	<b>63.1</b>



# Families First Assessments (FFA) finalised

By lead agency and District / Borough



	Carers in Herts	Child Development Centre	Early Years' setting	VCS (CHEXS)	Family Support Service	SFPT	FF Panels / FF Triage	Homelessness Prevention Team	Intensive Family Support	School / ESC / School Partnership	Services for Young People	For Baby's Sake	TOTAL
Broxbourne	1			2	10	1		2	36	13			65
East Hertfordshire					8		3		52	21			84
Dacorum	1	1	1		4	1	10	1	56	33	2		110
St. Albans			1		2		7	3	32	39		1	85
Hertsmere					6	1	1	1	35	7			51
Welwyn Hatfield					1	1	2	1	51	20		2	78
North Hertfordshire			2		12		2		25	26			67
Stevenage			1		7		4	5	36	23		1	77
Three Rivers			1		1			1	45	8	1		57
Watford					2			4	43	6			55
<b>TOTAL</b>	<b>2</b>	<b>1</b>	<b>6</b>	<b>2</b>	<b>53</b>	<b>4</b>	<b>29</b>	<b>18</b>	<b>411</b>	<b>196</b>	<b>3</b>	<b>4</b>	<b>729</b>

# Families First Assessments (FFA) finalised

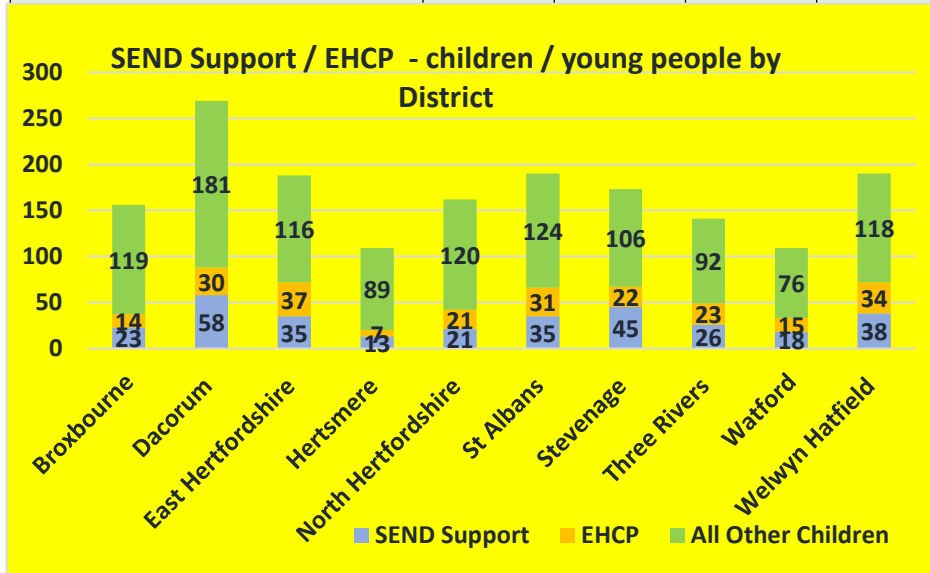
## By Quarter & District / Borough



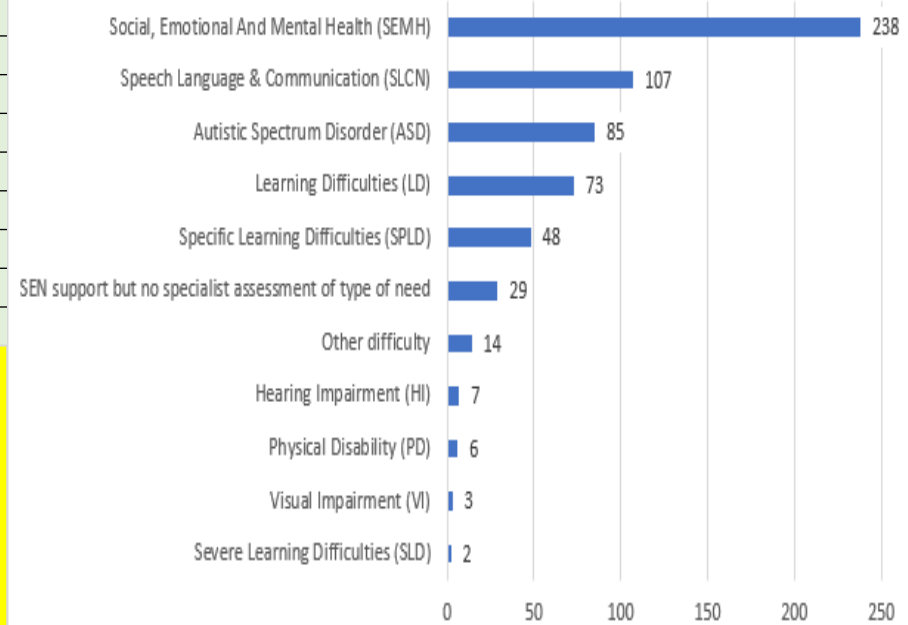
	Oct - Dec 2022	Jan - March 2023	Apr – June 2023	July - Sept 2023	Oct - Dec 2023	<i>Total</i>
Broxbourne	14	12	26	14	13	79
East Hertfordshire	17	25	14	23	22	101
Dacorum	30	29	25	21	35	140
St. Albans	20	26	22	13	24	105
Hertsmere	20	11	13	12	15	71
Welwyn Hatfield	12	15	11	29	23	90
North Hertfordshire	25	15	10	20	22	92
Stevenage	19	17	23	15	22	96
Three Rivers	8	16	13	14	14	65
Watford	18	21	13	10	11	73
<b>TOTAL</b>	<b>183</b>	<b>187</b>	<b>170</b>	<b>171</b>	<b>201</b>	<b>912</b>

# FFA – SEND SUPPORT & EHCP needs (All children & young people): January 2023 – December 2023

	SEND Support	EHCP	All Other Children	Total
Broxbourne	23	14	119	156
Dacorum	58	30	181	269
East Hertfordshire	35	37	116	188
Hertsmere	13	7	89	109
North Hertfordshire	21	21	120	162
St Albans	35	31	124	190
Stevenage	45	22	106	173
Three Rivers	26	23	92	141
Watford	18	15	76	109
Welwyn Hatfield	38	34	118	190
Hertfordshire	312	234	1141	1687



## Breakdown of SEN Type - Children and Young People with SEND Support and EHCPs (Supported by an FFA)



Total children & young people, excluding those who were 17 at the start of their FF Episode, but have subsequently reached the age of 18.

# Families First Assessments (FFA) finalised

## By children's ethnicity & District / Borough



	Asian or Asian British - Bangladeshi	Asian or Asian British - Indian	Asian or Asian British - Pakistani	Any Other Asian Background	Black or Black British - African	Black or Black British - Caribbean	Any Other Black Background	Mixed White and Asian	Mixed White and Black African	Mixed White and Black Caribbean	Any Other Mixed Background	White - British	Any Other White Background	White - Irish	Traveller of Irish Heritage or Gypsy / Roma	Any Other Ethnic Group	Not stated	Total
Broxbourne			1		18	9	1			10		106	7		1	5	1	159
East Hertfordshire	2		2	4	3					5	5	151	5			2	12	191
Dacorum			9	10	6			14	3	5	7	197	7			8	4	270
St Albans	6			1		2		3	2	10	15	134	1		3	9	8	194
Hertsmere		1	3	1	6		3	1	1	7	3	61	11			5	6	109
Welwyn Hatfield		1	3		4	2	2	1	8	9	2	144	4		1	2	9	192
North Hertfordshire	2			3	2			2		24	6	113	5	1			5	163
Stevenage		2	4		1	4		5	4	10	5	125	9			2	6	177
Three Rivers		3	4	4	3			5		4	5	98	10		5		1	142
Watford		5	9	1	13	7	3	3	1	5	4	45	10	1	2	1	2	112
<b>Hertfordshire</b>	<b>10</b>	<b>12</b>	<b>35</b>	<b>24</b>	<b>56</b>	<b>24</b>	<b>9</b>	<b>34</b>	<b>19</b>	<b>89</b>	<b>52</b>	<b>1174</b>	<b>69</b>	<b>2</b>	<b>12</b>	<b>34</b>	<b>54</b>	<b>1709</b>
% Total (Herts)	0.6	0.7	2.0	1.4	3.3	1.4	0.5	2.0	1.1	5.2	3.0	68.7	4.0	0.1	0.7	2.0	3.2	
2021 census (Herts)	0.6	4.1	1.5	2.5	2.4	1.3	0.1	1.2	0.5	1.1	1.1	71.8	8.1	1.6	0.3	0.1		



# Presenting needs % (family level) in completed FFAs

## FFAs completed – 12 months to December 2023

DISTRICT	Getting a good education	Early Years Development	Mental & Physical Health (Child / Young Person)	Mental & Physical Health (Adult)	Substance Misuse	Family Relationships	Crime & ASB	Domestic Abuse	Housing	Financial issues	Children keeping safe / risk of exploitation	Young Carers	Number of families
Broxbourne	73.8	29.2	81.5	70.8	18.5	78.5	12.3	49.2	55.4	67.7	36.9	27.7	65
East Hertfordshire	70.2	20.2	75.0	56.0	21.4	61.9	13.1	47.6	38.1	41.7	42.9	13.1	84
Dacorum	68.2	27.3	85.5	70.0	13.6	47.3	5.5	40.9	29.1	47.3	23.6	15.5	110
St. Albans	67.1	16.5	81.2	65.9	14.1	56.5	9.4	36.5	32.9	36.5	18.8	15.3	85
Hertsmere	51.0	11.8	70.6	60.8	23.5	68.6	7.8	51.0	29.4	43.1	29.4	2.0	51
Welwyn Hatfield	73.1	12.8	79.5	73.1	10.3	73.1	9.0	44.9	16.7	39.7	19.2	19.2	78
North Hertfordshire	80.6	26.9	86.6	79.1	13.4	77.6	10.4	35.8	34.3	56.7	26.9	16.4	67
Stevenage	70.1	23.4	80.5	62.3	14.3	66.2	9.1	40.3	46.8	46.8	27.3	16.9	77
Three Rivers	64.9	21.1	66.7	54.4	14.0	73.7	10.5	36.8	33.3	42.1	19.3	14.0	57
Watford	67.3	18.2	60.0	43.6	10.9	63.6	12.7	36.4	27.3	41.8	23.6	10.9	55
<b>TOTAL</b>	<b>69.1</b>	<b>21.1</b>	<b>77.9</b>	<b>64.5</b>	<b>15.2</b>	<b>69.7</b>	<b>9.7</b>	<b>41.8</b>	<b>34.2</b>	<b>46.1</b>	<b>26.7</b>	<b>15.5</b>	<b>729</b>

# Primary presenting identified need recorded for children & young people (FFAs)

	Broxbourne	Dacorum	East Hertfordshire	Hertsmere	North Hertfordshire	St Albans	Stevenage	Three Rivers	Watford	Welwyn Hatfield	Hertfordshire
A low income family	4		4		4	4				1	17
ADHD/ASD	11	28	16	11	12	24	22	11	2	19	156
Behaviour	16	40	21	8	10	26	15	15	15	21	187
Bereavement		1	1			2			3	2	9
Child with mental ill health or emotional well-being issues (unmet)	16	41	26	26	29	22	21	62	50	16	309
Child/Young Person alcohol and/or substance misuse		1								1	2
Child/Young Person being bullied					1	1					2
Child/Young Person bullying				1							1
Child/Young Person developmental delay	2	7	4	1	6	1	2	1	1	4	29
Child/Young Person ill health, complex health needs and multiple disabilities	3	8	2		1	2	11	2	2	8	39
Child/Young Person involved in anti-social behaviour	3	1		1	4		2			1	12
Child/Young Person learning disability	1	3	6		3		2	2		4	21
Child/Young Person mental ill health (diagnosed)	5	3	6	1	2	9	6	1		2	35
Child/Young Person physical disability		3			2		1			1	7
Child/Young Person school attendance below 50%	8	8	11	1	6	10	6	8	4	9	71
Child/young person Self Harming		1					1	1	2	1	6
Child/Young Person underage sexual activity or unsafe sexual behaviour	1		1	1	1	1					5
Domestic abuse			10	7		2	1			3	23
Educational needs	1	18	9	2	10	7	8	2	1	8	66
Emotional harm	1	10	3		5	6	5		2	2	40
Family Breakdown			1	4						1	6
Family relationships	13	35	15	9	15	25	28	3		47	190
Inability to afford a number of food and clothing items				3							3
Living in poor or overcrowded housing / homelessness	25	4	4	4	3	5	15	10	10	12	92
Missing education/absent	8	4	8	1	3	9	2		2	2	39
NEET	1	3				1					5
Neglect	4	8	1	4	9	3		5	3		37
Obesity	1	1	1								3
Parent/Carer deceased					1						1
Parental alcohol and/or substance misuse	8	2	1	2	1						14
Parental conflict	1		3								4
Parental mental ill health issues (diagnosed)	1		5							1	7
Parental mental ill health or emotional well-being issues (unmet)	2		2							1	5
Parental/Carer ill-health or longstanding limiting illness							1				1
Parental/Carer offending/imprisonment				3							3
Parenting capacity	2		6	3	1					1	13
Physical harm	2						1	1	5	1	10
Sexual Exploitation			2						1		3
Sexual harm		1			1			1		1	4
Social Isolation		1	1		2					2	6
Teenage Pregnancy										1	1
Transition						1				1	2
Young Carer	2	4	2	4	6	5	5	1		1	30
<b>Total</b>	<b>142</b>	<b>236</b>	<b>172</b>	<b>102</b>	<b>139</b>	<b>166</b>	<b>155</b>	<b>126</b>	<b>103</b>	<b>175</b>	<b>1516</b>

# Primary presenting identified need recorded for adults (FFAs)

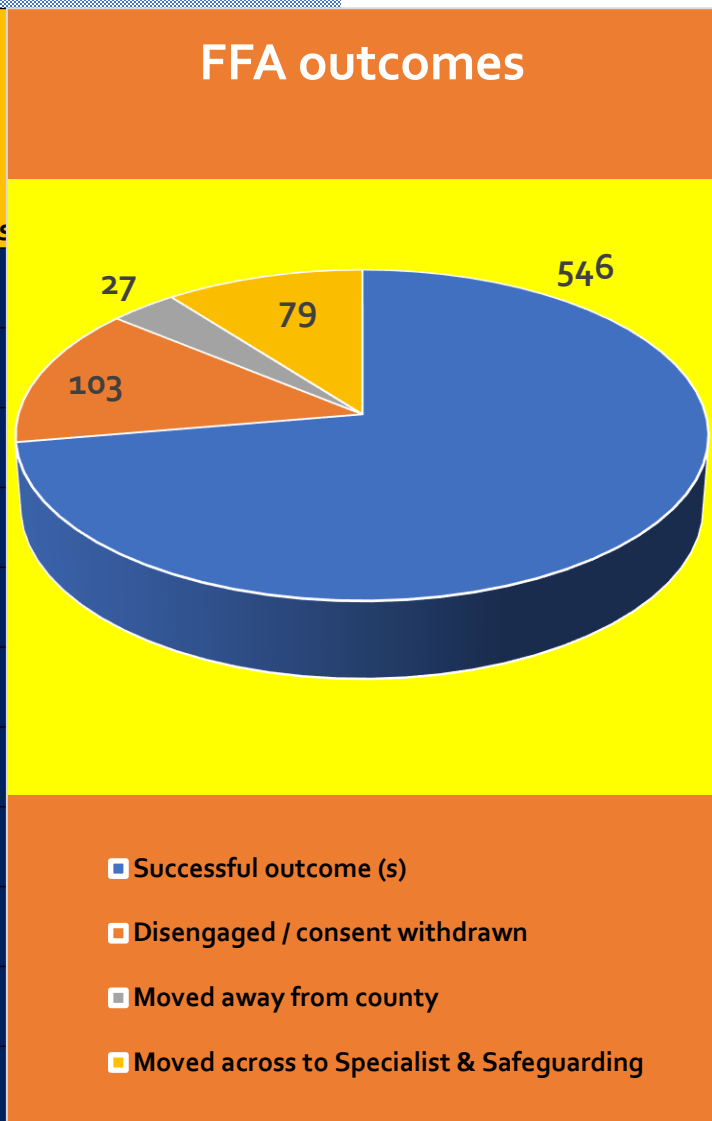
	Broxbourne	Dacorum	East Hertfordshire	Hertsmere	North Hertfordshire	St Albans	Stevenage	Three Rivers	Watford	Welwyn Hatfield	Hertfordshire
A low income family	2	2	2	1	3		4		1	2	17
ADHD/ASD	1	1	1						1	1	5
Behaviour	1			1			1	1	2		6
Bereavement			2	2	1	1	1			1	8
Child with mental ill health or emotional well-being issues (unmet)	1		1	1	2			1	1		7
Child/Young Person alcohol and/or substance misuse					1						1
Child/Young Person ill health, complex health needs and multiple disabilities			1								1
Child/Young Person involved in anti-social behaviour						1					1
Child/Young Person mental ill health (diagnosed)							1				1
Child/Young Person school attendance below 90%			1								1
Domestic abuse	1	7	7	2	1	5	8	10	7	5	53
Emotional harm				1						1	2
Family Breakdown	3	10	13	9	13	4	4	1	1	12	70
Family relationships	1	2	3			4				1	11
Inability to afford a number of food and clothing items	1		1					1		2	5
Living in poor or overcrowded housing / homelessness	18	7	7	6	3	10	10	3	7	3	74
NEET	1										1
Neglect				1							1
No one in the family is in work		2		1	2		1				6
Parent carer Learning disability		1			1	1	4	1			8
Parental alcohol and/or substance misuse	4	2	3	1	2	2	3	6	4		27
Parental conflict	4		4	1		1		4	2	5	21
Parental mental ill health issues (diagnosed)	3	11	4	13	9	8	10	10	12	9	89
Parental mental ill health or emotional well-being issues (unmet)	11	34	24	6	20	25	17	5	4	14	160
Parental/Carer disability			2		2	3	2				9
Parental/Carer ill-health or longstanding limiting illness	5	9	5	3	3	2	11	2	1	2	43
Parental/Carer involvement in anti-social behaviour	1										1
Parental/Carer offending/imprisonment				1							1
Parenting capacity	18	46	24	18	24	26	15	38	30	51	290
Partner with mental ill health or emotional well-being issues	2	6	2	2	8	2	7	1	2	1	33
Physical harm	1			1		1					3
Short Term Work: Parental need not assessed	2					1					3
Social Isolation			3		2	1					6
<b>Total</b>	<b>81</b>	<b>140</b>	<b>110</b>	<b>71</b>	<b>97</b>	<b>98</b>	<b>99</b>	<b>84</b>	<b>75</b>	<b>110</b>	<b>965</b>

# FFA closure/outcome: January 2023 – December 2023

## By District

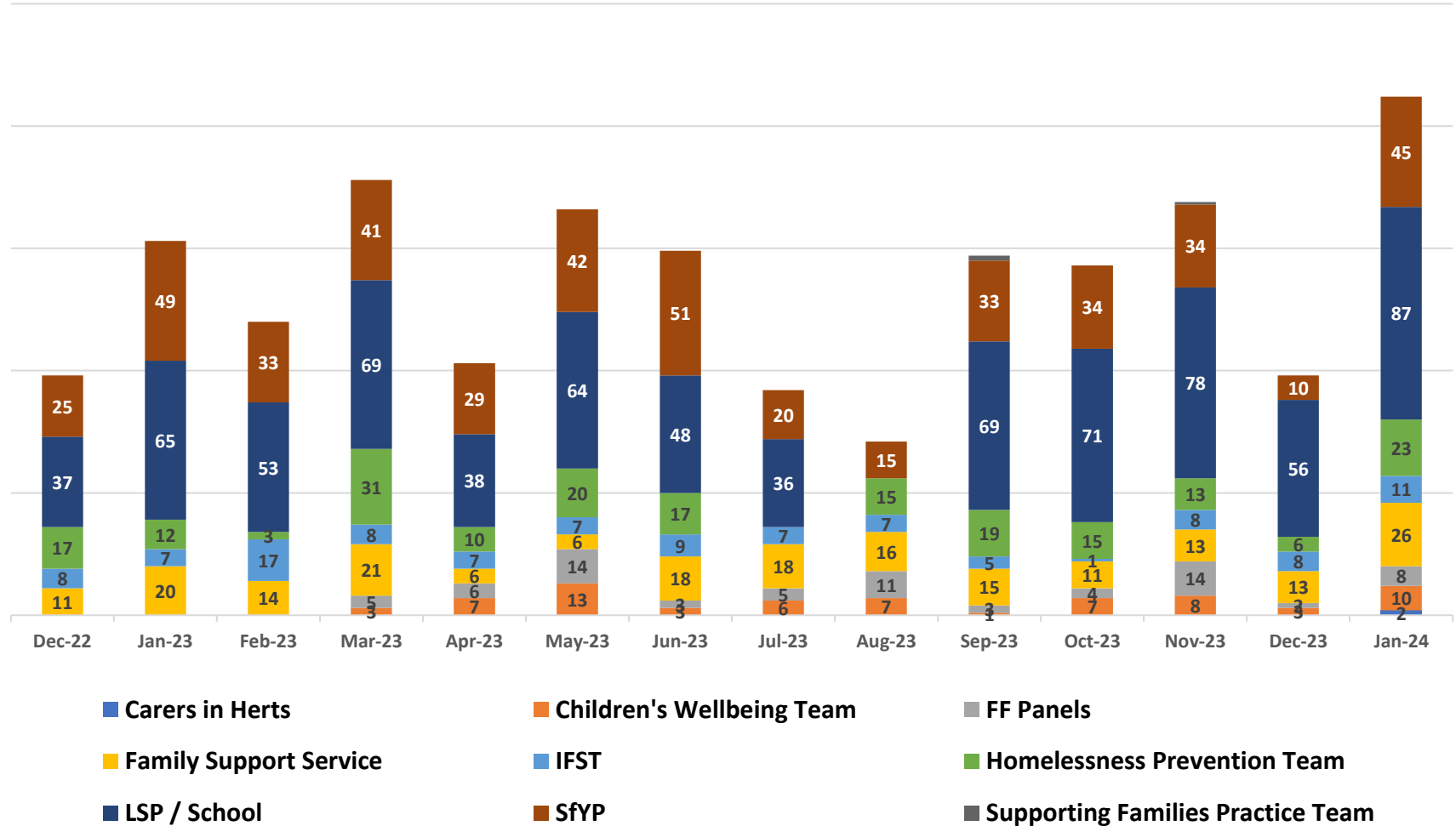


DISTRICT	Successful outcome (s)	Disengaged / consent withdrawn	Moved away from county	Moved across to Specialist & Safeguarding	TOTAL	% successful
Broxbourne	44	11	1	6	62	72%
East Hertfordshire	65	11	2	13	91	73%
Dacorum	69	14	4	12	99	73%
St. Albans	70	10	2	8	90	80%
Hertsmere	44	7	5	3	59	81%
Welwyn Hatfield	44	11	4	6	65	72%
North Hertfordshire	58	13	1	7	79	74%
Stevenage	66	7	2	12	87	78%
Three Rivers	34	8	4	8	54	68%
Watford	52	11	2	4	69	78%
<b>TOTAL</b>	<b>546</b>	<b>103</b>	<b>27</b>	<b>79</b>	<b>755</b>	<b>75%</b>



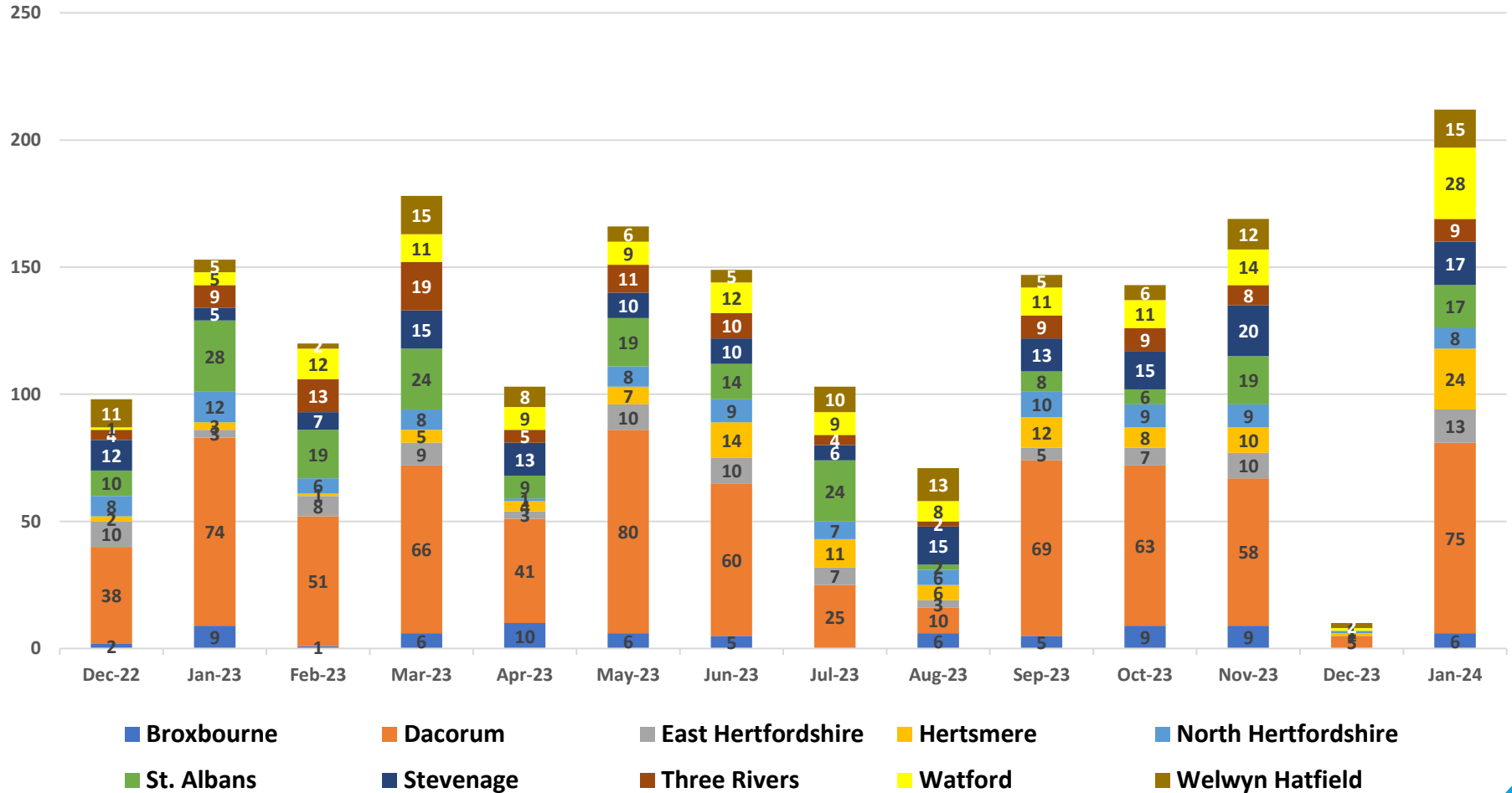
# Short Term Work (January 2023 – December 2023 (exc. cancelled forms))

## Children & young People by lead agency and District / Borough



# Short Term Work January – December 2023 (exc. cancelled forms)

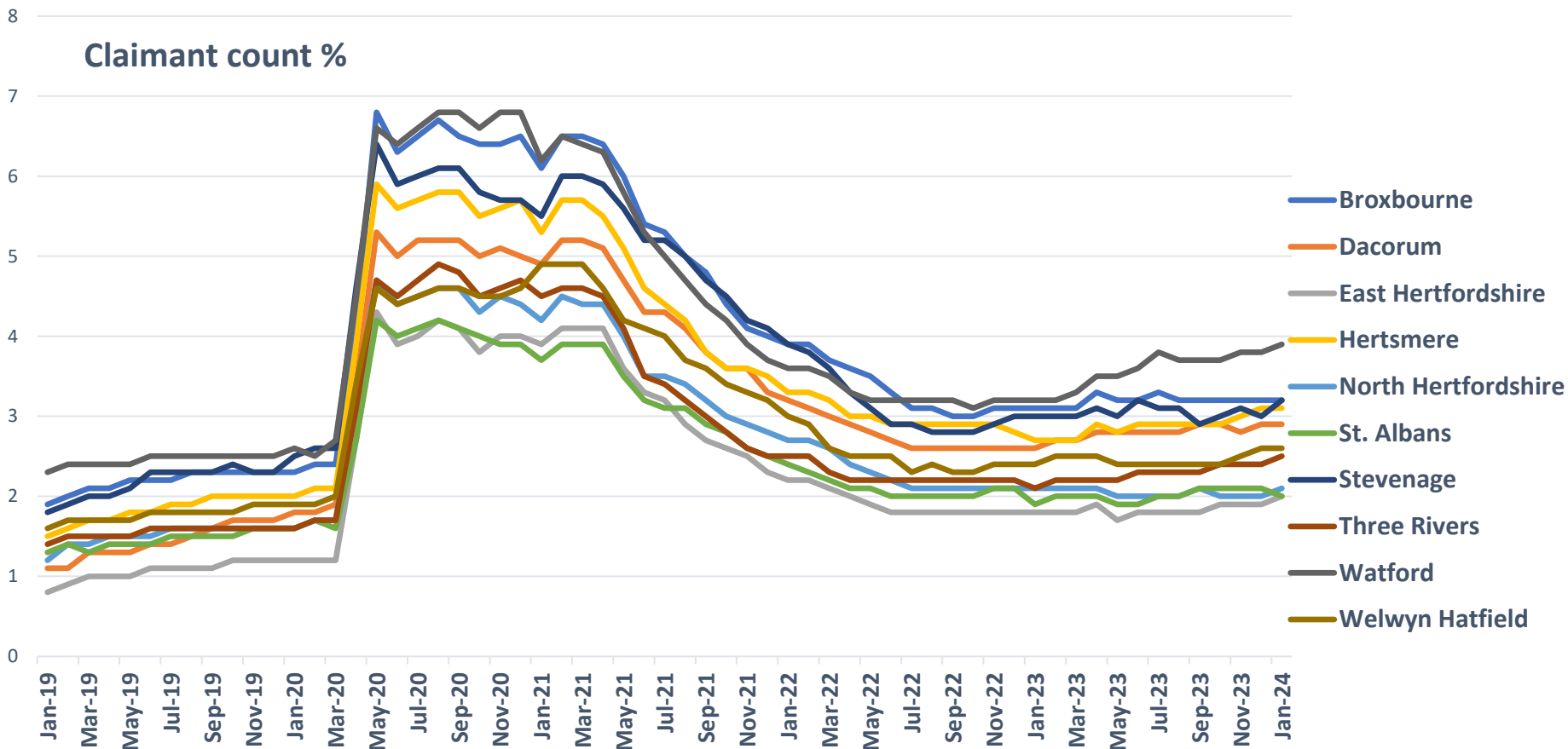
## Children & young People by lead agency and District / Borough



# Claimant count % (not seasonally adjusted)

## By District – January 2019 – January 2024

(county increase from 1.9% - 2.7% between March 2020 & January 2024)



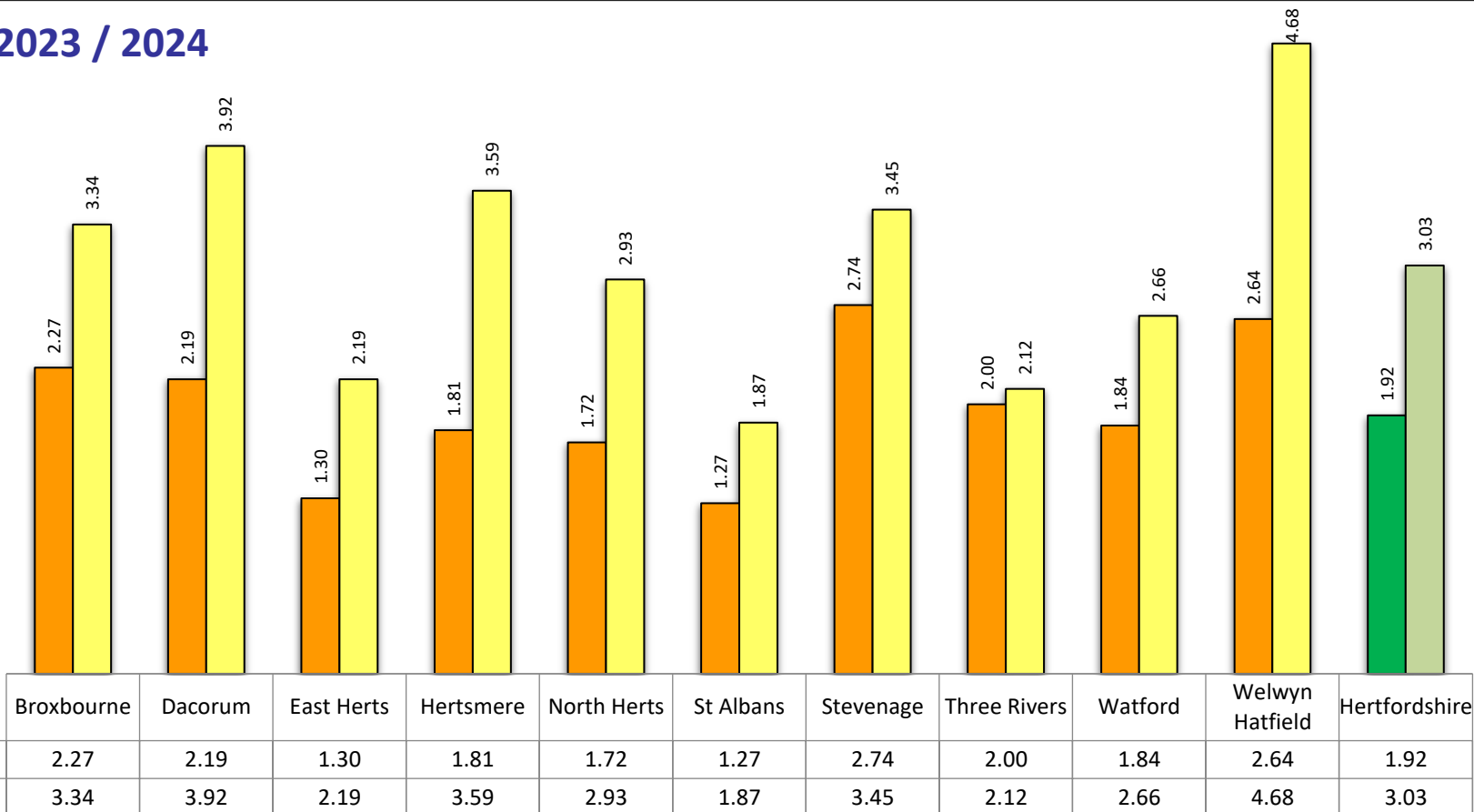
Watford has the highest claimant count rate, as of January 2024, at 3.9%; East Herts and St. Albans have the lowest rate at 2.0%. The Hertfordshire rate for 18-24 year olds is 3.7% (January 2024); this was 2.7% in March 2020.

# 16-18 NEET (Years 12 & 13): January 2023 & January 2024

## By District



### NEET % - 2023 / 2024



In addition to the NEET rate increasing from 1.9% to 3% in the last 12 months, the in-learning rate has fallen during the same period from 94.4% to 93.6%. The lost contact rate has improved, falling from 1.26% to 1.07% between January 2023 and January 2024. NEET rates for our vulnerable groups are significantly higher, hence the investment in initiatives for targeted support.

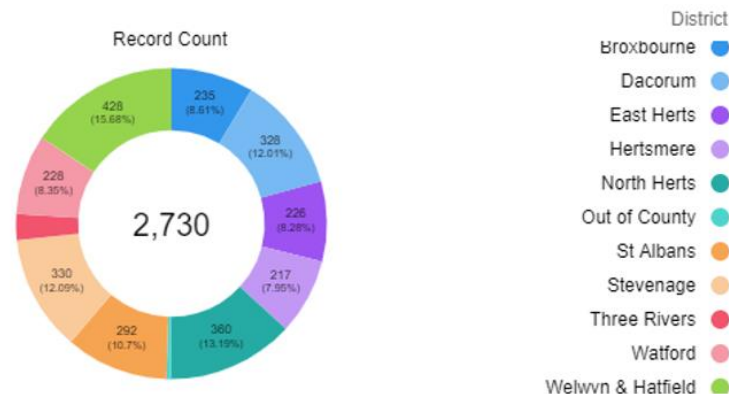


# Young Carers Service (Carers in Herts) data

## April 2023 – December 2023



Referral sources	Apr - Jun 2023	Jul - Sep 2023	Oct - Dec 2023
Adults Services	1	2	4
Childrens Services	25	29	12
Self Referral	52	90	121
HPFT	2	0	3
HCT	2	1	7
Herts Help	0	0	0
Hospital	5	0	2
GP	3	0	5
Carers in Herts (internal)	16	8	5
Other	15	2	4
Schools	50	19	26



		Apr - Jun 2023	Jul - Sep 2023	Oct - Dec 2023
Ethnicity for new Young Carers registered	Asian, Asian -Pakistani, Asian - Other, Asian British & Welsh	4	10	12
	Black, Black British, Black Welsh, Caribbean or African, Black - Other	1	4	10
	Mixed or Multiple	3	13	7
	White - British or other	65	92	82
	Other ethnic group	3	4	9
	Prefer not to say	2	0	1

	Apr - Jun 2023	Jul - Sep 2023	Oct - Dec 2023
No. of YCs taking part in activities	91	146	87