

Performance report



**Families
First**

Early help, brighter futures



Hertfordshire

October 2023 – September
2024

www.hertfordshirefamiliesfirst.org.uk

Families First – assessment numbers



Family First Assessments (FFAs) are used to identify support for families who agree to multi-agency early help.



The number of FFAs finalised in the 12 months to the end of September 2024 was 733, which included 1,780 children. 27.7% of children supported are non-White British (the 2021 census population figure was 28.2%). 17.6% of children had an EHCP and 14.8% had a SEND support status.



Intensive Family Support teams (440), schools (94) and school partnerships (87) led on the majority of FFAs.



Between October 2023 and September 2024, 1,505 children were supported using 'short term work' interventions.

Presenting needs and outcomes



82% of FFAs include at least one child / young person member of the family with a health need and 79% identified an adult with a health need. 78% identify a need against the Family Relationships criteria and 74% of FFAs include concerns relating to education.



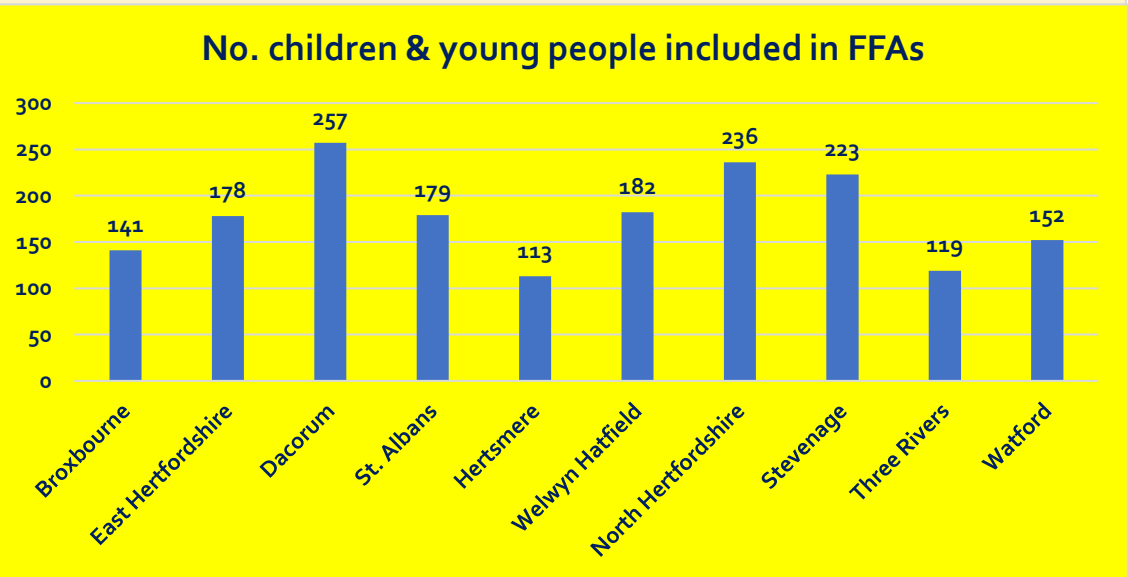
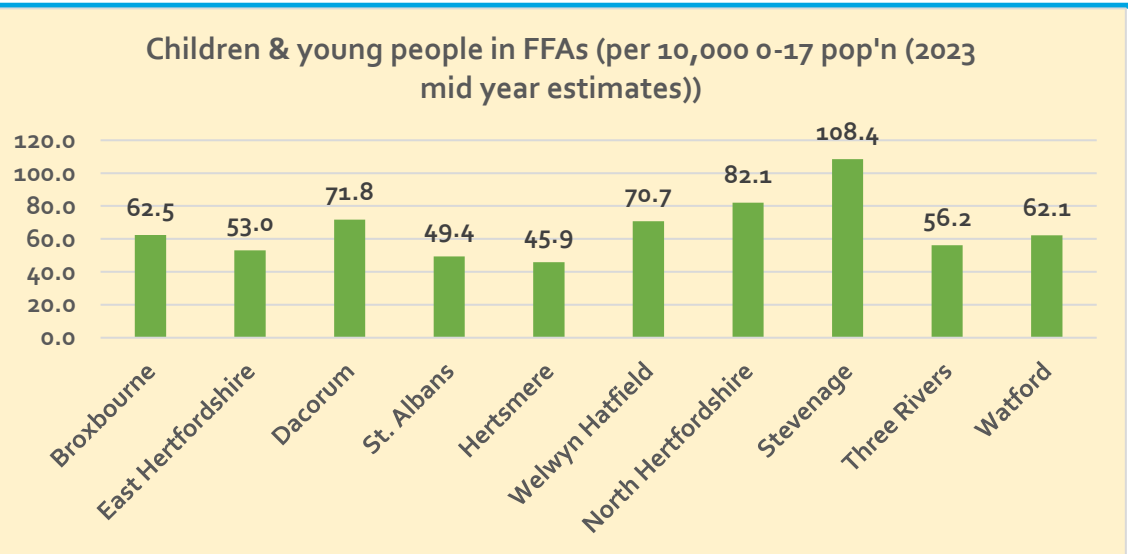
The outcome success rate following the completion of FFAs for the period between October 2023 and September 2024 was 76%. 11% of families disengaged or withdrew consent; however, it is often found that much has been achieved prior to disengagement. 13% of FFAs result in cases transferred to LCS for support from Specialist & Safeguarding Services.

Families First Assessments (Oct. 2023 – Sept. 2024)



No. of children in completed FFAs

District	No. Children	Children per 10,000 (2023 Mid Year Estimates)
Broxbourne	141	62.5
East Hertfordshire	178	53.0
Dacorum	257	71.8
St. Albans	179	49.4
Hertsmere	113	45.9
Welwyn Hatfield	182	70.7
North Hertfordshire	236	82.1
Stevenage	223	108.4
Three Rivers	119	56.2
Watford	152	62.1
Hertfordshire	1,760	65.1



Families First Assessments (FFA) finalised

By lead agency and District / Borough



	Carers in Hertfordshire	CHEXS	Deaf & Hearing Support	Early Years' setting	Family Support Service	SFPT	FF Panels	Homelessness Prevention Team	Intensive Family Support	School / ESC	School Partnership	Services for Young People	TOTAL
Broxbourne		4		1	6		2	2	39	6			60
East Hertfordshire					4		3		46	21	1		75
Dacorum			1		2	1	12	2	52	9	27	2	108
St. Albans				1	4	1	9		23	8	28		74
Hertsmere	1				2		1		42	2	3		51
Welwyn Hatfield					5				61	8	4		78
North Hertfordshire				1	14		5	1	45	22	9		97
Stevenage	1			1	5		5	3	45	14	6		80
Three Rivers					1		2	2	35	1	5		46
Watford							2	3	52	3	4		64
TOTAL	2	4	1	4	43	2	41	13	440	94	87	2	733

Families First Assessments (FFA) finalised

By Quarter & District / Borough

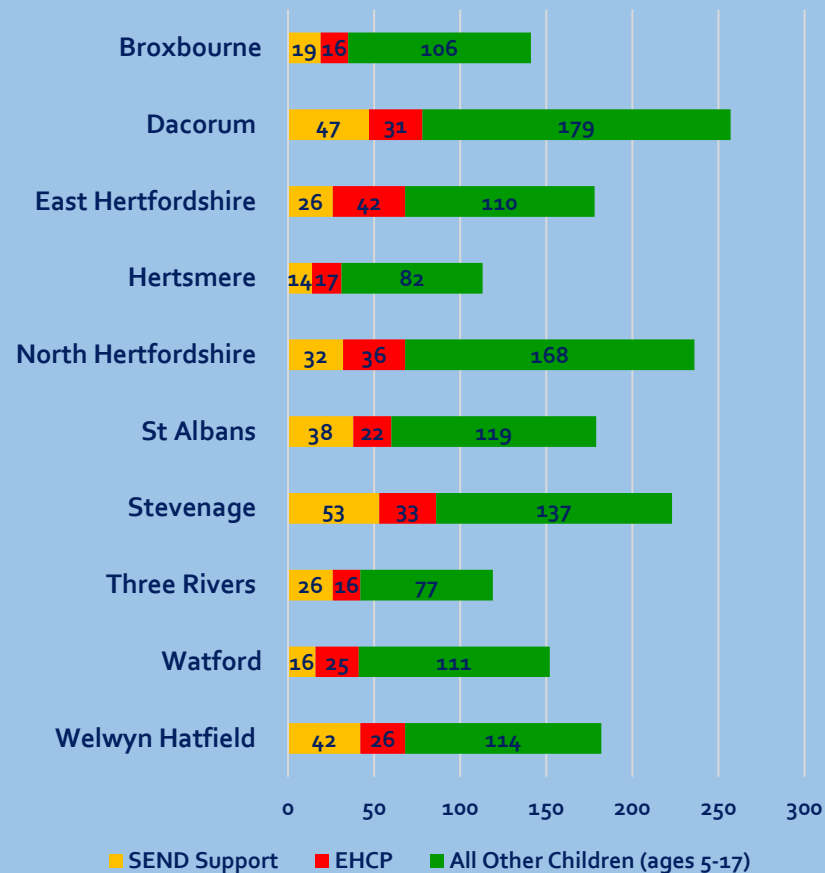


	July - Sept 2023	Oct - Dec 2023	Jan - March 2024	Apr - June 2024	July - Sept 2024	<i>Total</i>
Broxbourne	14	13	22	13	13	75
East Hertfordshire	23	24	18	22	11	98
Dacorum	21	33	29	29	18	130
St. Albans	13	24	19	13	18	87
Hertsmere	12	13	23	7	9	64
Welwyn Hatfield	29	23	25	17	12	106
North Hertfordshire	19	25	31	18	21	114
Stevenage	14	24	23	21	11	93
Three Rivers	15	13	9	17	7	61
Watford	10	11	19	17	18	75
TOTAL	170	203	218	174	138	903

FFA – SEND SUPPORT & EHCP needs: October 2023 – September 2024

	SEND Support	EHCP	All Other Children (ages 5-17)	Total	SEND Support %	EHCP %	EHCP / SEND Support %
Broxbourne	19	16	106	141	13.5	11.3	24.8
Dacorum	47	31	179	257	18.3	12.1	30.4
East Hertfordshire	26	42	110	178	14.6	23.6	38.2
Hertsmere	14	17	82	113	12.4	15.0	27.4
North Hertfordshire	32	36	168	236	13.6	15.3	28.8
St Albans	38	22	119	179	21.2	12.3	33.5
Stevenage	53	33	137	223	23.8	14.8	38.6
Three Rivers	26	16	77	119	21.8	13.4	35.3
Watford	16	25	111	152	10.5	16.4	27.0
Welwyn Hatfield	42	26	114	182	23.1	14.3	37.4
Hertfordshire	313	264	1203	1780	17.6	14.8	32.4

Children & young people supported by a new FFA - SEND status



Families First Assessments (FFA) finalised

By children's ethnicity & District / Borough



	Asian or Asian British - Bangladeshi	Asian or Asian British - Indian	Asian or Asian British - Pakistani	Any Other Asian Background	Black or Black British - African	Black or Black British - Caribbean	Any Other Black Background	Mixed White and Asian	Mixed White and Black African	Mixed White and Black Caribbean	Any Other Mixed Background	White - British	Any Other White Background	White - Irish	Traveller of Irish Heritage or Gypsy / Roma	Any Other Ethnic Group	Not stated	Total
Broxbourne			4	2	10	7		1		14	6	92	3		1		1	141
East Hertfordshire		2			8	3	1	1	2	3	3	144	6	2			3	178
Dacorum			10	2	6			7	5	5	7	194	8			6	7	257
St Albans	6			1	3			4	6	6	6	126	10			5	6	179
Hertsmere		5	3	3	7		1	2		2	7	60	7		3	6	7	113
Welwyn Hatfield		1		2	6	2	5	1	6	11	3	129	9			1	6	182
North Hertfordshire				1	2			4	4	15	6	190	2				12	236
Stevenage					4		1	5	4	4	4	190	5		4		2	223
Three Rivers		5						1		1	6	94	9	2			1	119
Watford			19	9	10	6	1	5	2	15	2	68	8		1	3	3	152
Hertfordshire	6	13	36	20	56	18	9	31	29	76	50	1,287	67	4	9	21	48	1,780
% Total (Herts)	0.3	0.7	2.0	1.1	3.1	1.0	0.5	1.7	1.6	4.3	2.8	72.3	3.8	0.2	0.5	1.2	2.7	
2021 census (Herts)	0.6	4.1	1.5	2.5	2.4	1.3	0.1	1.2	0.5	1.1	1.1	71.8	8.1	1.6	0.3	0.1		

Presenting needs % (family level) in completed FFAs



FFAs completed – 12 months to September 2024

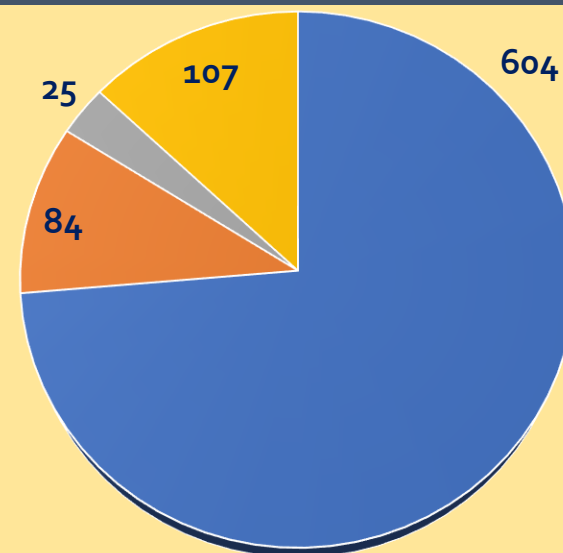
DISTRICT	Getting a good education	Early Years Development	Mental & Physical Health (Child / Young Person)	Mental & Physical Health (Adult)	Substance Misuse	Family Relationships / Parenting capacity	Crime & ASB	Domestic Abuse	Housing	Financial issues	Children keeping safe / risk of exploitation	Young Carers	Number of families
Broxbourne	66.7	30.0	80.0	93.3	31.7	80.0	25.0	63.3	46.7	51.7	36.7	15.0	60
East Hertfordshire	80.0	28.0	86.7	88.0	25.3	72.0	10.7	54.7	36.0	56.0	34.7	22.7	75
Dacorum	78.7	15.7	87.0	78.7	18.5	50.0	7.4	41.7	34.3	38.0	25.9	14.8	108
St. Albans	68.9	18.9	90.5	73.0	18.9	62.2	6.8	29.7	28.4	41.9	14.9	14.9	74
Hertsmere	60.8	11.8	70.6	70.6	13.7	84.3	3.9	39.2	35.3	41.2	15.7	7.8	51
Welwyn Hatfield	71.8	15.4	74.4	73.1	11.5	74.4	6.4	44.9	23.1	37.2	24.4	11.5	78
North Hertfordshire	78.4	21.6	84.5	80.4	21.6	90.7	9.3	41.2	35.1	53.6	26.8	23.7	97
Stevenage	77.5	20.0	86.3	76.3	17.5	83.8	8.8	38.8	37.5	38.8	35.0	20.0	80
Three Rivers	67.4	21.7	65.2	80.4	15.2	84.8	2.2	37.0	15.2	39.1	15.2	8.7	46
Watford	75.0	12.5	76.6	75.0	15.6	71.9	6.3	32.8	34.4	42.2	25.0	15.6	64
TOTAL	73.7	19.5	81.6	78.9	19.1	78.0	8.7	42.3	33.0	44.1	26.1	16.2	733

FFA closure/outcome: October 2023 – September 2024

By District



FFA outcomes



- Successful outcome(s)
- Disengaged / consent withdrawn
- Moved away from county
- Moved across to Specialist & Safeguarding

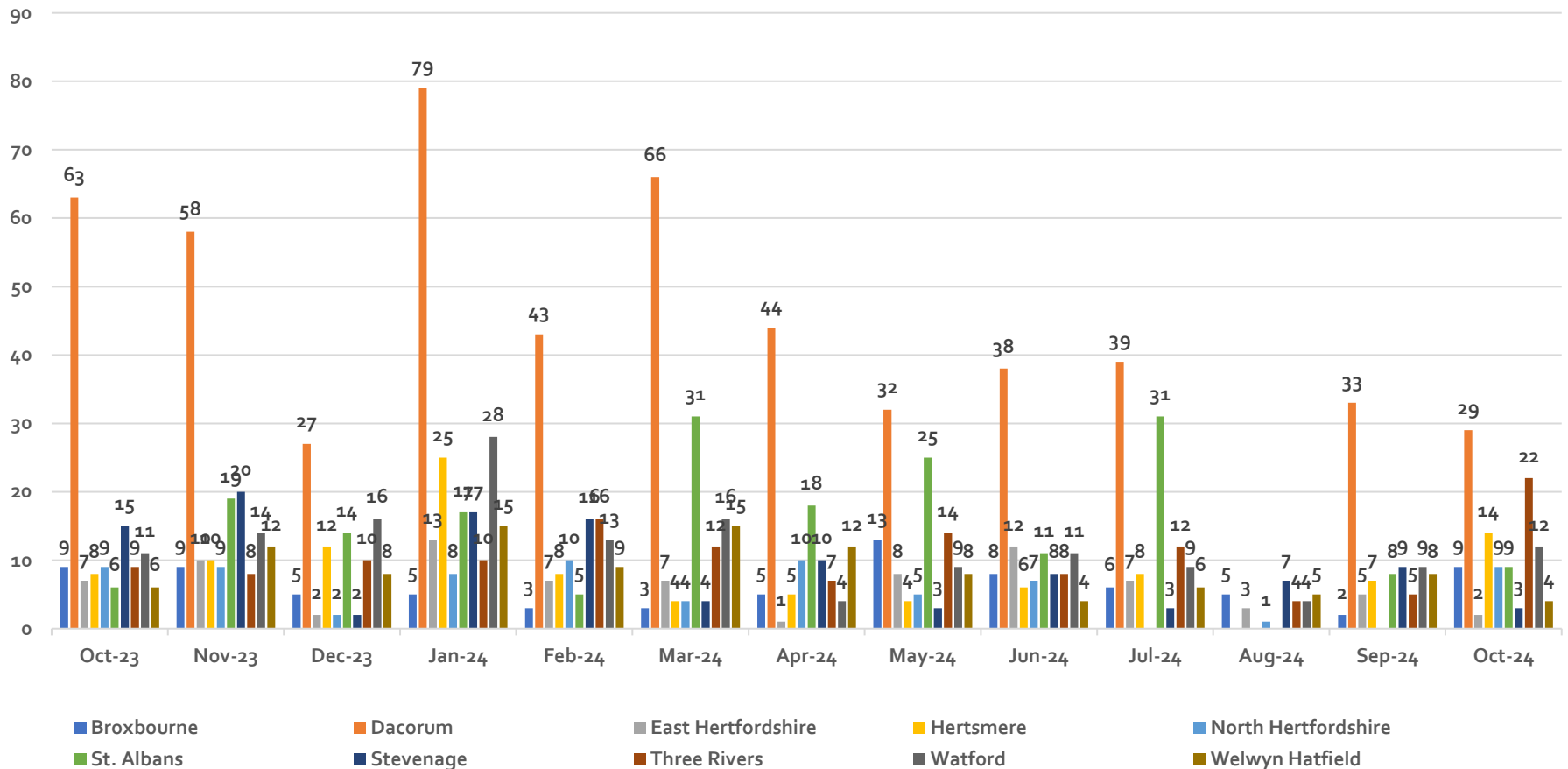
DISTRICT	Successful outcome(s)	Disengaged / consent withdrawn	Moved away from county	Moved across to Specialist & Safeguarding	TOTAL	% success
Broxbourne	50	12	2	8	72	71%
East Hertfordshire	60	5	2	10	77	80%
Dacorum	98	10	3	20	131	77%
St. Albans	74	6	3	13	96	80%
Hertsmere	44	6	5	8	63	76%
Welwyn Hatfield	52	9	5	14	80	69%
North Hertfordshire	66	8	2	16	92	73%
Stevenage	67	11	1	7	86	79%
Three Rivers	48	7	1	4	60	81%
Watford	45	10	1	7	63	73%
TOTAL	604	84	25	107	820	76%

Short Term Work: October 2023 – October 2024 (exc. cancelled forms)

Children & young People by District / Borough



Short Term Work - Children & Young People by month (start date)

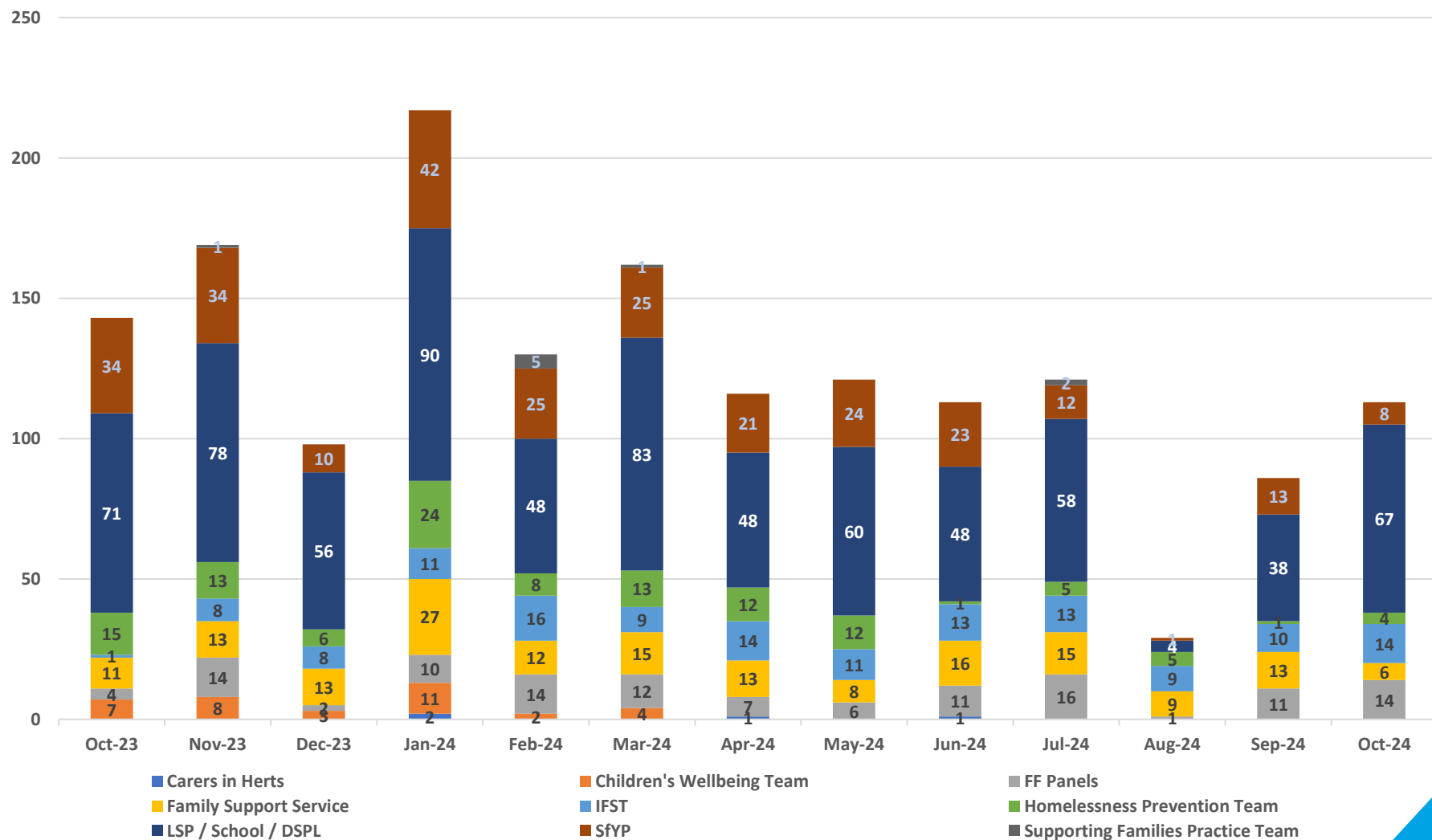


Short Term Work October 2023- October 2024 (exc. cancelled forms)

Children & young People by lead agency



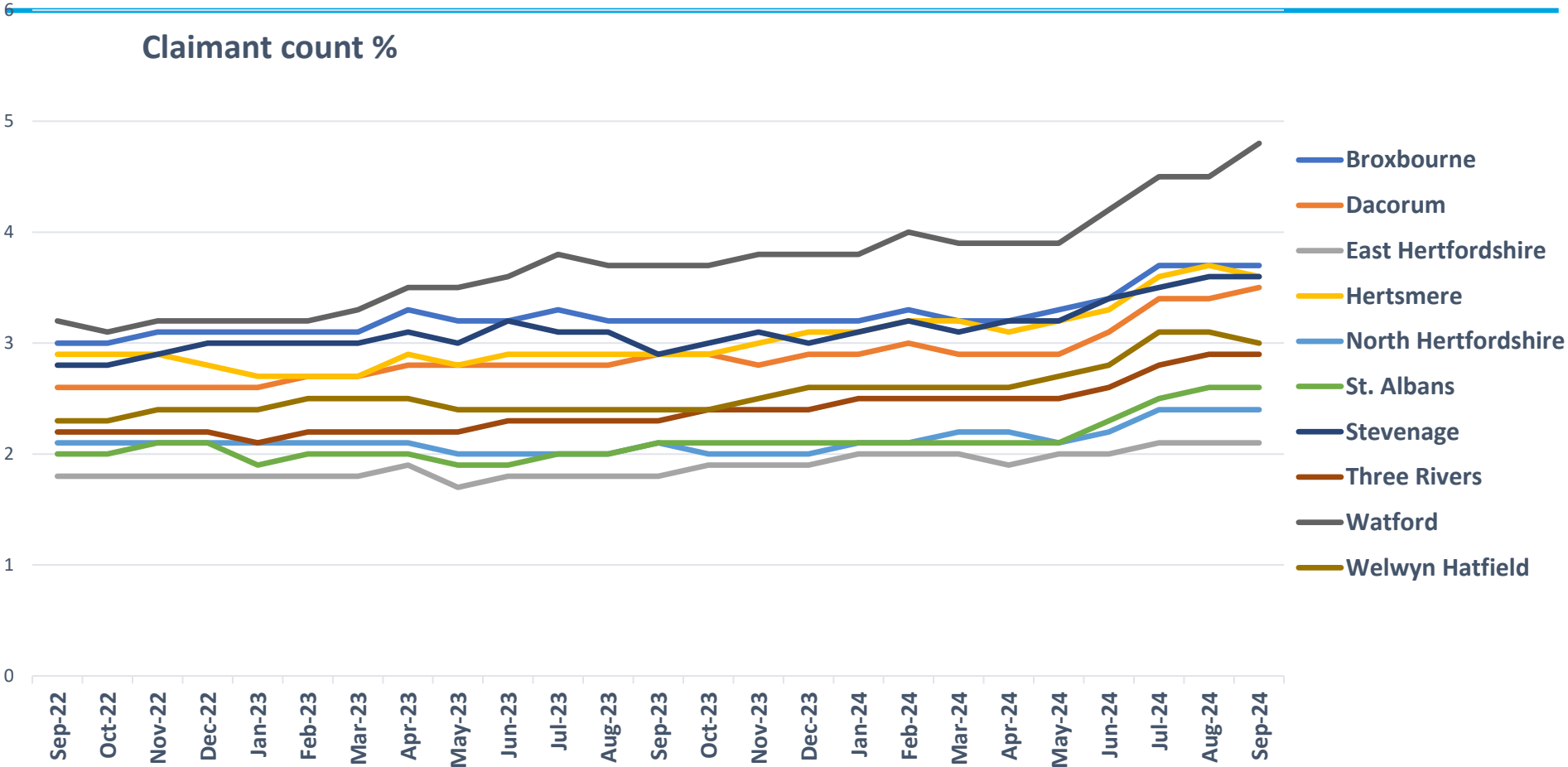
Short Term Work starts by Team / Agency



Claimant count % (not seasonally adjusted)

By District – Sept. 2022 – Sept. 2024

(county increase from 2.4% to 3.1% between Sept. 2021 & Sept. 2024)



Watford has the highest claimant count rate, as of September 2024, at 4.8%; East Herts has the lowest rate at 2.1%. The Hertfordshire rate for 18-24 year olds is 4.1% (Sept. 2024); this was 3.2% in September 2022.

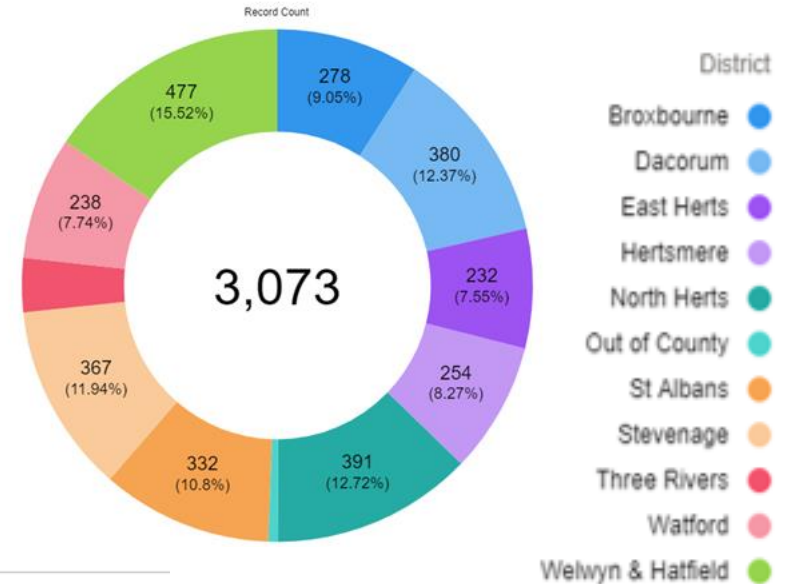
Young Carers Service (Carers in Hertfordshire data)

April 2024 – September 2024



Referral sources: April – Sept. 2024

Young Carer referral sources	Apr - Jun 24	Jul - Sep 24	Total	%
Adults Services	4	2	6	1.6
Childrens Services	22	25	47	12.2
Self Referral	101	100	201	52.2
HPFT	5	0	5	1.3
HCT	8	0	8	2.1
Herts Help	0	0	0	0.0
Hospital	8	5	13	3.4
GP	1	2	3	0.8
CinH employees	8	7	15	3.9
Other	21	7	28	7.3
Schools	33	26	59	15.3
Total	211	174	385	



Total registered

